

Quick Start Guide for MAC

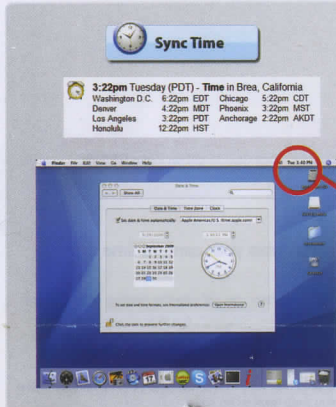
Getting Started With PhotoTrackr

Important: In order to geotag your photos, you need to synchronize your camera time first. See below for details.

1. Take PhotoTrackr out where it can see the sky and turn it on. It might take up to 15 minutes to get an initial GPS fix.
2. When GPS signal is fixed, the blue LED will flash indicating it is recording.

Camera Time Synchronization

Important: in order to geotag your photos, you need to synchronize your camera time first.



You can synchronize your camera time in one of the following ways:

Sync with Web

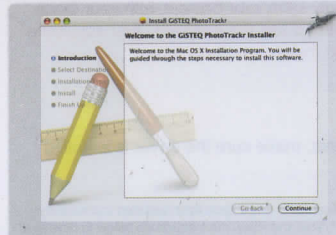
1. Take your camera out and go to time setting screen.
2. Go to <http://www.gisteq.com/Mac> and click on "Sync Time"
3. On the next page, it will display the current time. Adjust your camera time to match the time displayed on the screen.

Sync with Computer

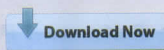
1. Take your camera out and go to time setting screen.
2. Click the time shown in the upper right hand corner on your desktop and select "open Date & Time".
3. In the Date & Time window, make sure the system time is synchronized to the time server by checking the box "Set date & time automatically".
4. Adjust your camera time to match the time displayed on the screen the best you can.

*Your camera is ready to use with PhotoTrackr. If you haven't recorded any trips yet, you might start to do so. If you have your trips and photos ready for download, please go to the next section.

Software Installation



1. Go to <http://www.gisteq.com/Mac/>
2. Click "Download Now" to get the latest version online.



3. After downloading the program, double click on the installation package to install the PhotoTrackr Mac software.

Create Photo Album



1. After the software installation is completed, you can launch the PhotoTrackr software. (It is installed under Application as default.)
2. In the main screen, Click "Create a New Album" and type in the name for your album.
3. Click "Create Album" to confirm.

Add Photos

Important: Please copy the photos to your local hard drive before importing.



Geotagging Assistant

After the album is created, you can go to GPS&Geotag->Geotagging Assistant and follow the steps to geotag your photos. You can also do it manually by following the steps below.

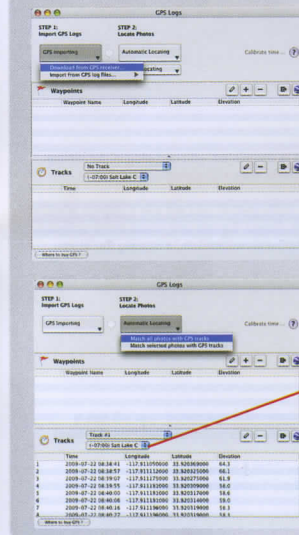
1. In the Thumbnail view, you can drag-and-drop the photos into the window.

Geotagging:

2. Extend the hidden panel and select the Geotag tab.
3. Click "Locate Photos with GPS"

Download Tracks

Important: Please turn on PhotoTrackr and plug it in before proceeding



Step 1 - Download Tracks

1. Click "GPS Import" and select "Download from GPS receiver"
2. In the new pop-up window, select "GISTEQ PhotoTrackr Mini". In the USB / Serial Port, it should show "usbserial".



3. Select "Download Tracks" and click "Import". "Downloading may take a few minutes depending on the amount of data in the device. If the program is not responding for more than 10 minutes, please unplug the device and plug it back in to reset it.

Important: before geotagging the photos, you need to select the right time zone.

Step 2 - Locate Photos

4. Click "Automatic Locating" and select "Match all photos with GPS tracks"
5. All your photos will be geotagged. You can go back to Thumbnail view or Map view to see the geotagged photos.

Hardware Usage Overview

Important: Please turn on PhotoTrackr before connecting it to the computer (if the device is not charged, LED will not be lit when the device is turned on). Please plug the device into the USB port for one hour to charge the battery before using it for the first time. (Once the device is plugged in, you should see a blue LED and a green LED.)

- 1 **Blue Status LED:**
 - When GPS is fixed, blue LED will flash.
 - When a waypoint is tagged, blue LED will flash rapidly
 - When device is turned on and is searching for GPS, blue LED will stay solid
- 2 **Red/Green Status LED:**
 - When battery is low, Red LED will flash constantly.
 - When the device is turned on, Red LED might flash a few times.
 - When charging, Green LED will be on (1 hr for a full charge)
- 3 **Waypoint Button:** press and hold the button until the blue LED flashes rapidly
USB Connection: device needs to be turned on before connecting to PC

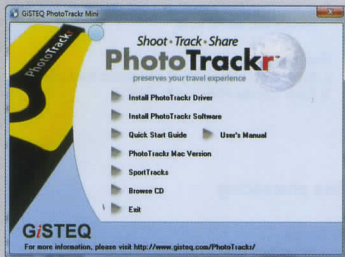


Important: for detailed instructions, please visit <http://www.gisteq.com/phototracker/phototracker-dpl900.php> and click User's Manual

Quick Start Guide for Windows

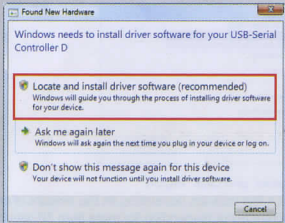
Hardware/Software Installation

Warning: Do not connect PhotoTracker until the driver is installed.



1. Insert the software CD into your computer and the installation will start automatically.
2. Select "Install PhotoTracker Driver" to start the driver installation.
3. Follow the on-screen instructions to continue with installation.

* Latest software update is available at:
<http://www.gisteq.com/program-update.html>
 under PhotoTracker Mini Full Installation Package.



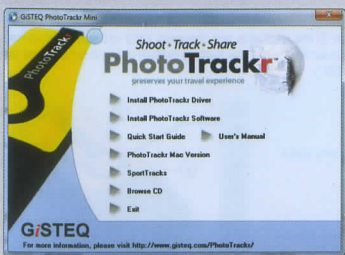
4. After the installation is completed, you can plug in the device.
 * Please turn on the device before plugging it in.
5. When PhotoTracker is plugged in, you will see a pop-up window as shown on the left. Select "Locate and install driver software (recommended)" and windows will start installing the driver.

*It might take a few minutes for windows to search for the driver.



7. When the driver installation is completed, you will see a message saying "Prolific USB-to-Serial Com Port (COMxx) installed."

*Please write down the COM port number. You will need this for later to retrieve log data.

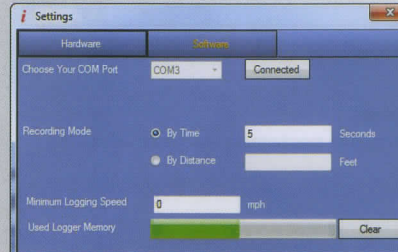


* If the COM port is not shown, you can go to device manager and expand the Ports category to see the device COM port. Device manager is under Control Panel->System->Hardware->Device Manager. You need to get the COM port number when downloading the data from the device.

9. When driver installation is finished, you can go back to the CD Autorun Menu and select "install PhotoTracker software" to continue with PhotoTracker software installation.

Getting Started With PhotoTracker

If the software is launched for the first time, you should verify the hardware settings before you use the device. Make sure the logger is turned on and connected to the computer before proceeding.



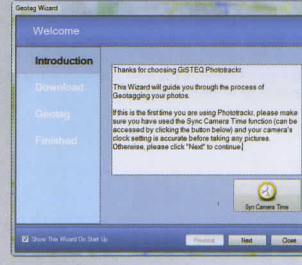
1. Select Settings
2. Select the COM port
3. Click Connect
4. Default recording mode:
 - By Time: 5 seconds
 - Minimum Logging Speed: 0 mph
5. Click OK to save.
6. To clear the log memory, click "clear" next to the Used Logger Memory indicator.

Important: in order to geotag your photos, you need to synchronize your camera time first. See below for details.

1. Take PhotoTracker out where it can see the sky and turn it on. It might take up to 15 minutes to get an initial GPS fix.
2. When GPS signal is fixed, the blue LED will flash indicating it is recording.

Camera Time Synchronization

Important: in order to geotag your photos, you need to synchronize your camera time first.



1. When you launch the program, you will see the geotag wizard which will guide you step by step through the whole process.
2. Step 1: click "Sync Camera Time" to see the current GPS time. Adjust your camera time to match the GPS time the best you can.

*Your camera is ready to use with PhotoTracker. If you haven't recorded any locations yet, you may start to do so.

If you have your logs and photos ready, please go to the next step.

* You can simply sync your camera with your clock if you don't want to use the program. Just adjust the camera time to match your local time.

Download Trip Data and Photos

Important: before connecting PhotoTracker to your computer, make sure the driver is installed.



*After the software and driver have been installed successfully, plug in PhotoTracker and follow the instructions below to download the trip data.

Go back to the Geotag Wizard and proceed to Step 2:

1. Step 2: click "Download".
2. Select the right COM port and then click "Connect".
3. Click "Select User" and select your account.
4. Click "Retrieve Data" to download the trip data.
5. go to Step 3 to add all your photos and click Next to continue.

* Please see reverse for Hardware Usage